

NORTH ATLAS

COMMERCIAL REAL ESTATE

Industrial For Lease

10 Datomar Road
RM of Headingley

Gross Lease Rent: \$8,995
per month plus utilities

Square Footage: $\pm 6,000$ SF
Yard Area: ± 1 Acre
Loading: Two (2) -16' ft Grade Doors
Zoning: IG - Industrial General

North Atlas Commercial Real Estate

1201 - 191 Lombard Avenue
Winnipeg, MB, R3B 0X1
www.NorthAtlas.ca

Khush Grewal

Partner
204.891.1999 Mobile
204.942.2400 Office
Khush@NorthAtlas.ca

Jonah Levine

Partner & Managing Broker
204.918.1438 Mobile
204.942.2400 Office
Jonah@NorthAtlas.ca

FOR LEASE | 10 Datomar Road | RM of Headingley

PROPERTY HIGHLIGHTS

NORTH ATLAS

COMMERCIAL REAL ESTATE

- Located in the RM of Headingley, south of Wilkes Ave and off Hall Rd.
- The property is presently utilized as a Truck & Trailer Repair facility, and the Landlord is open to selling his personal tools and equipment for an additional sum of money.
- Preferred Lease Term: 2 to 5 years
- Entire Property is fully fenced and graveled, suitable for a trucking operation.
- 3 phase power with 400 AMP service
- Year Built: 2010
- No City of Winnipeg business taxes



North Atlas Commercial Real Estate

1201 - 191 Lombard Avenue
Winnipeg, MB, R3B 0X1
www.NorthAtlas.ca

Khush Grewal

Partner
204.891.1999 Mobile
204.942.2400 Office
Khush@NorthAtlas.ca

Jonah Levine

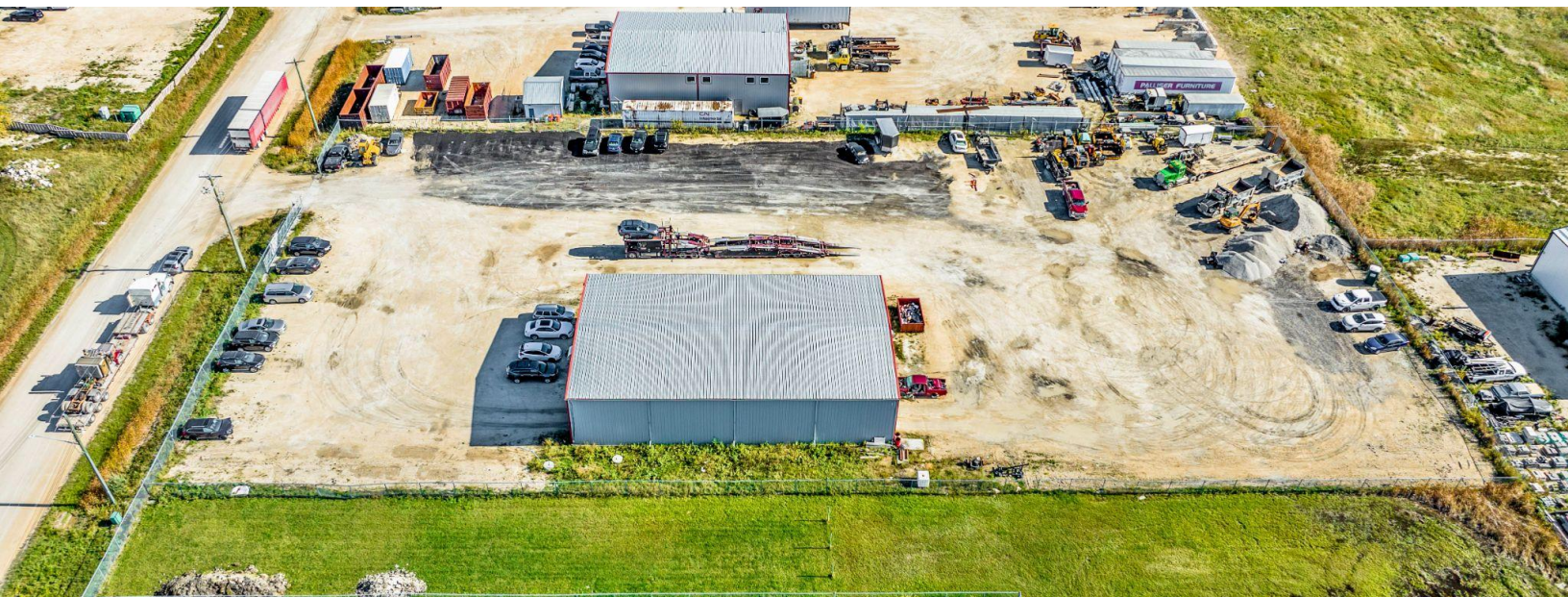
Partner & Managing Broker
204.918.1438 Mobile
204.942.2400 Office
Jonah@NorthAtlas.ca

FOR LEASE | 10 Datomar Road | RM of Headingley

PROPERTY PHOTOS

NORTH ATLAS

COMMERCIAL REAL ESTATE



North Atlas Commercial Real Estate

1201 - 191 Lombard Avenue
Winnipeg, MB, R3B 0X1
www.NorthAtlas.ca

Khush Grewal

Partner
204.891.1999 Mobile
204.942.2400 Office
Khush@NorthAtlas.ca

Jonah Levine

Partner & Managing Broker
204.918.1438 Mobile
204.942.2400 Office
Jonah@NorthAtlas.ca

FOR LEASE | 10 Datomar Road | RM of Headingley

COMPOUND AREA

NORTH ATLAS

COMMERCIAL REAL ESTATE



**Landlord
Compound**

**Tenant
Compound**

North Atlas Commercial Real Estate

1201 - 191 Lombard Avenue
Winnipeg, MB, R3B 0X1
www.NorthAtlas.ca

Khush Grewal

Partner
204.891.1999 Mobile
204.942.2400 Office
Khush@NorthAtlas.ca

Jonah Levine

Partner & Managing Broker
204.918.1438 Mobile
204.942.2400 Office
Jonah@NorthAtlas.ca

NORTH ATLAS

COMMERCIAL REAL ESTATE



FOR LEASE

10 Datomar Road
RM of Headingley

North Atlas Commercial Real Estate

1201 - 191 Lombard Avenue
Winnipeg, MB, R3B 0X1
www.NorthAtlas.ca

Khush Grewal

Partner
204.891.1999 Mobile
204.942.2400 Office
Khush@NorthAtlas.ca

Jonah Levine

Partner & Managing Broker
204.918.1438 Mobile
204.942.2400 Office
Jonah@NorthAtlas.ca