



NORTH ATLAS

COMMERCIAL REAL ESTATE

Move-in-Ready Office Space for Lease

880 Portage Avenue
Winnipeg, MB

\$21.00 PSF Gross

**1,582 - 2,132 SF
Fully Built Furnished Office**

North Atlas Commercial Real Estate

1201 - 191 Lombard Avenue
Winnipeg, MB, R3B 0X1
www.NorthAtlas.ca

Jonah Levine

Partner & Managing Broker
204.918.1438 Mobile
204.942.2400 Office
Jonah@NorthAtlas.ca

Khush Grewal

Partner
204.891.1999 Mobile
204.942.2400 Office
Khush@NorthAtlas.ca

FOR LEASE | 880 Portage Avenue | Winnipeg, MB

PROPERTY HIGHLIGHTS

NORTH ATLAS

COMMERCIAL REAL ESTATE

Discover your next office location at 880 Portage Avenue. Offering 1,582 - 2,132 square feet of fully built-out and furnished office, this space is ready for your organization's next chapter.

- **Included Parking:** 2 dedicated parking spots included at no additional charge
- **Location:** Only 7 minutes to Portage & Main, 4 minutes to Polo Park Shopping Centre, 12 minutes to the airport, and strategically positioned to avoid the worst of rush hour traffic
- **Security:** On-site staffed building security with fob access for a secure environment
- **Layout:** Flexibility for large executive offices or several group workspaces and meeting rooms
- **Amenities:** Proximity to public transportation, dining, shopping, and other essential services
- **Accessibility:** Elevator access for added convenience
- **Maintenance:** Institutionally maintained building ensuring a high standard of care

880 Portage Avenue provides a convenient and well-maintained working environment, suitable for the needs of various organizations. With its strategic location, on-site security, and ready-to-use office space, this professionally maintained building offers an excellent solution for your next office space.



North Atlas Commercial Real Estate

1201 - 191 Lombard Avenue
Winnipeg, MB, R3B 0X1
www.NorthAtlas.ca

Jonah Levine

Partner & Managing Broker
204.918.1438 Mobile
204.942.2400 Office
Jonah@NorthAtlas.ca

Khush Grewal

Partner
204.891.1999 Mobile
204.942.2400 Office
Khush@NorthAtlas.ca

FOR LEASE | 880 Portage Avenue | Winnipeg, MB

EXTERIOR PHOTOS

NORTH ATLAS

COMMERCIAL REAL ESTATE



North Atlas Commercial Real Estate

1201 - 191 Lombard Avenue
Winnipeg, MB, R3B 0X1
www.NorthAtlas.ca

Jonah Levine

Partner & Managing Broker
204.918.1438 Mobile
204.942.2400 Office
Jonah@NorthAtlas.ca

Khush Grewal

Partner
204.891.1999 Mobile
204.942.2400 Office
Khush@NorthAtlas.ca

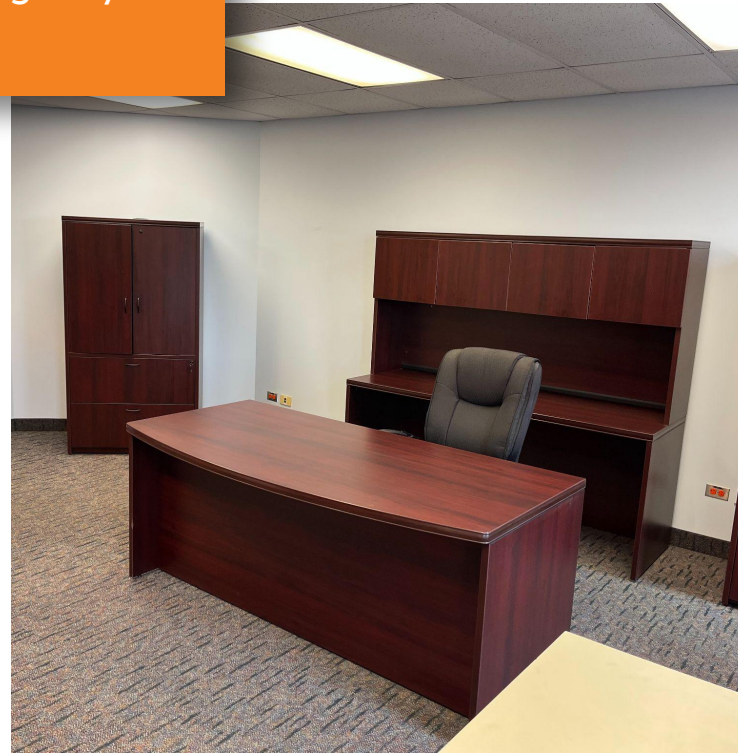
FOR LEASE | 880 Portage Avenue | Winnipeg, MB

INTERIOR PHOTOS

NORTH ATLAS

COMMERCIAL REAL ESTATE

Professionally maintained building offering fully built and furnished office space.



North Atlas Commercial Real Estate

1201 - 191 Lombard Avenue
Winnipeg, MB, R3B 0X1
www.NorthAtlas.ca

Jonah Levine

Partner & Managing Broker
204.918.1438 Mobile
204.942.2400 Office
Jonah@NorthAtlas.ca

Khush Grewal

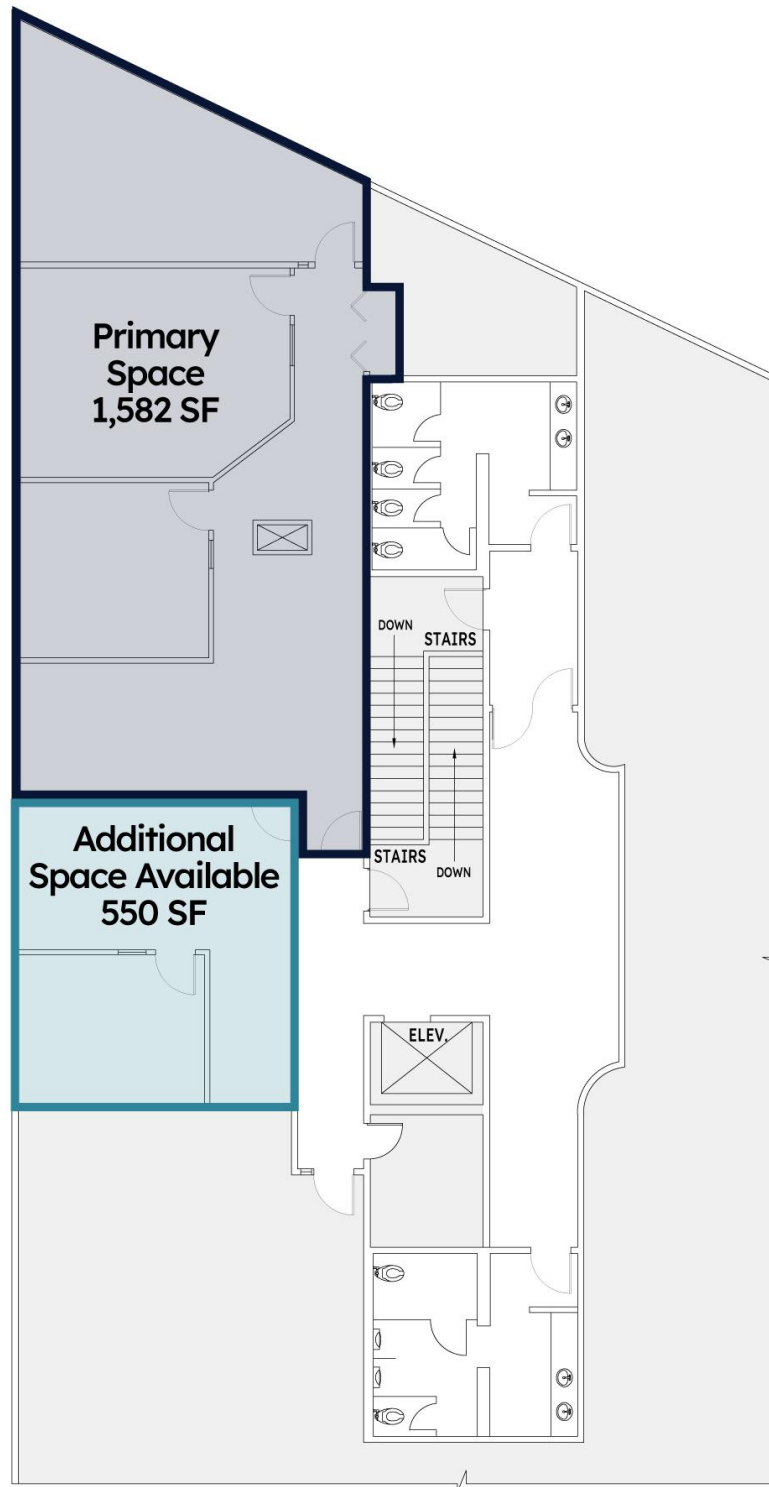
Partner
204.891.1999 Mobile
204.942.2400 Office
Khush@NorthAtlas.ca

FOR LEASE | 880 Portage Avenue | Winnipeg, MB

PENTHOUSE FLOOR PLAN

NORTH ATLAS

COMMERCIAL REAL ESTATE



North Atlas Commercial Real Estate

1201 - 191 Lombard Avenue
Winnipeg, MB, R3B 0X1
www.NorthAtlas.ca

Jonah Levine

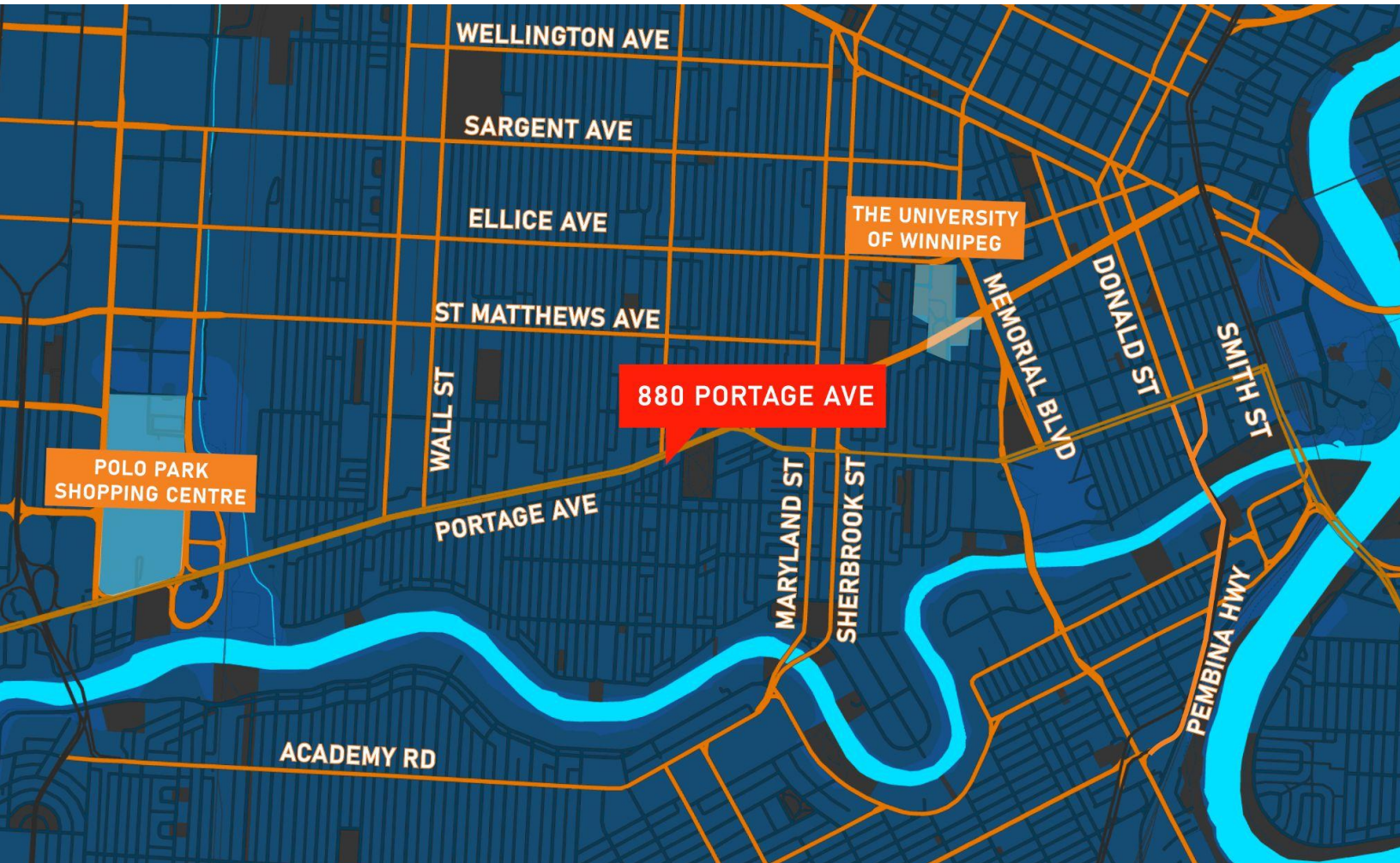
Partner & Managing Broker
204.918.1438 Mobile
204.942.2400 Office
Jonah@NorthAtlas.ca

Khush Grewal

Partner
204.891.1999 Mobile
204.942.2400 Office
Khush@NorthAtlas.ca

NORTH ATLAS

COMMERCIAL REAL ESTATE



FOR LEASE

880 Portage Avenue
Winnipeg, MB

North Atlas Commercial Real Estate

1201 - 191 Lombard Avenue
Winnipeg, MB, R3B 0X1
www.NorthAtlas.ca

Jonah Levine

Partner & Managing Broker
204.918.1438 Mobile
204.942.2400 Office
Jonah@NorthAtlas.ca

Khush Grewal

Partner
204.891.1999 Mobile
204.942.2400 Office
Khush@NorthAtlas.ca