

# NORTH ATLAS

COMMERCIAL REAL ESTATE

## Office For Lease

*500 Portage Avenue  
Winnipeg, MB*



### North Atlas Commercial Real Estate

1201 - 191 Lombard Avenue  
Winnipeg, MB, R3B 0X1  
[www.NorthAtlas.ca](http://www.NorthAtlas.ca)

### Jonah Levine

Partner & Managing Broker  
204.918.1438 Mobile  
204.942.2400 Office  
[Jonah@NorthAtlas.ca](mailto:Jonah@NorthAtlas.ca)

### Khush Grewal

Partner  
204.891.1999 Mobile  
204.942.2400 Office  
[Khush@NorthAtlas.ca](mailto:Khush@NorthAtlas.ca)

## PROPERTY HIGHLIGHTS

There's an energetic feeling to 500 Portage Avenue, located in the shadow of the vibrant University of Winnipeg campus and all the its surrounding amenities. New investments in 2018 elevated the exterior, lobby, elevators and main floor amenities of this wonderful office building located just on the edge of downtown.

As a future office tenant at 500 Portage, you'll enjoy:



Convenience of proximity to every amenity downtown, in Osborne Village, in St. Boniface, on Academy Road AND in the Polo Park shopping district inside of a 7 minute drive, all without having to experience the worst of downtown rush hour.



The vibrancy and energy outside your front door that can only be found around an urban university campus.



Professional on site 24/7 maintenance and the operational expertise of a major Canadian property manager.

Connected to a larger residential and retail complex, as well as the wider neighbourhood, 500 Portage offers business owners and staff convenience and prestige. Retail amenities on site include a convenience store, sushi restaurant, pizza place, bubble tea shop, medical clinic, and barbershop. Parking is available on site and underground, and some of the best bus connections in Winnipeg are located right outside the front door.



### North Atlas Commercial Real Estate

1201 - 191 Lombard Avenue  
Winnipeg, MB, R3B 0X1  
[www.NorthAtlas.ca](http://www.NorthAtlas.ca)

### Jonah Levine

Partner & Managing Broker  
204.918.1438 Mobile  
204.942.2400 Office  
[Jonah@NorthAtlas.ca](mailto:Jonah@NorthAtlas.ca)

### Khush Grewal

Partner  
204.891.1999 Mobile  
204.942.2400 Office  
[Khush@NorthAtlas.ca](mailto:Khush@NorthAtlas.ca)



OFFICE FOR LEASE | 500 Portage Avenue | Winnipeg, MB

## VIBRANT SURROUNDINGS

**NORTH  
ATLAS**  
COMMERCIAL REAL ESTATE

THE  
GOOD  
WILL



STELLA'S

SUSHIGEN

wag

Thanks to proximity to the University of Winnipeg and many other important downtown anchors, you'll find fantastic amenities steps away that fit all lifestyles, and a comfortable energetic urban environment that is hard to replicate.



### North Atlas Commercial Real Estate

1201 - 191 Lombard Avenue  
Winnipeg, MB, R3B 0X1  
[www.NorthAtlas.ca](http://www.NorthAtlas.ca)

### Jonah Levine

Partner & Managing Broker  
204.918.1438 Mobile  
204.942.2400 Office  
[Jonah@NorthAtlas.ca](mailto:Jonah@NorthAtlas.ca)

### Khush Grewal

Partner  
204.891.1999 Mobile  
204.942.2400 Office  
[Khush@NorthAtlas.ca](mailto:Khush@NorthAtlas.ca)

## PROPERTY DETAILS

**Net Rental Rate:** \$13.50 per square foot

**Additional Rent:** \$14.75 per square foot

*(2024 Estimated. Including Management Fee)*

- 24/7 On Site Maintenance
- Underground and surface parking available (4 stalls per 1000 SF)
- Building Signage Opportunity
- Brand new lobby, elevator cabs, and exterior finish

UNIT	APPROX. SPACE AVAILABLE	
200	5,425 SF	} Can be combined 9,096 SF
210	2,000 SF	
220	759 SF	
230	912 SF	
310	1,445 SF	
350	1,885 SF	
380	1,845 SF	
400	11,563 SF	Full Floor
510	3,354 SF	} Can be combined 6,878 SF
595	3,524 SF	
600	11,563 SF	Full Floor
720	1,733 SF	



### North Atlas Commercial Real Estate

1201 - 191 Lombard Avenue  
Winnipeg, MB, R3B 0X1  
[www.NorthAtlas.ca](http://www.NorthAtlas.ca)

### Jonah Levine

Partner & Managing Broker  
204.918.1438 Mobile  
204.942.2400 Office  
[Jonah@NorthAtlas.ca](mailto:Jonah@NorthAtlas.ca)

### Khush Grewal

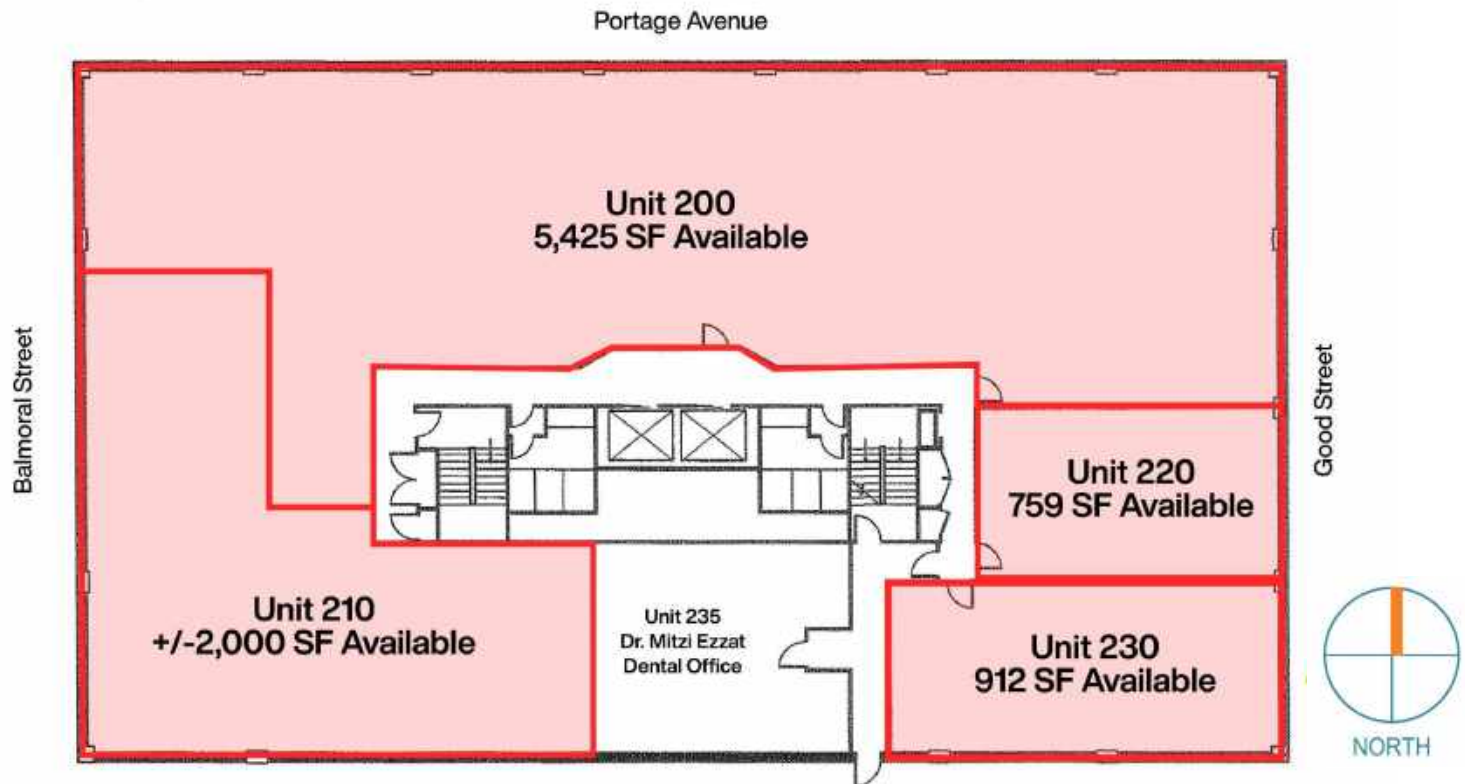
Partner  
204.891.1999 Mobile  
204.942.2400 Office  
[Khush@NorthAtlas.ca](mailto:Khush@NorthAtlas.ca)



OFFICE FOR LEASE | 500 Portage Avenue | Winnipeg, MB

## SECOND FLOOR OPPORTUNITY

**NORTH  
ATLAS**  
COMMERCIAL REAL ESTATE



### North Atlas Commercial Real Estate

1201 - 191 Lombard Avenue  
Winnipeg, MB, R3B 0X1  
[www.NorthAtlas.ca](http://www.NorthAtlas.ca)

### Jonah Levine

Partner & Managing Broker  
204.918.1438 Mobile  
204.942.2400 Office  
[Jonah@NorthAtlas.ca](mailto:Jonah@NorthAtlas.ca)

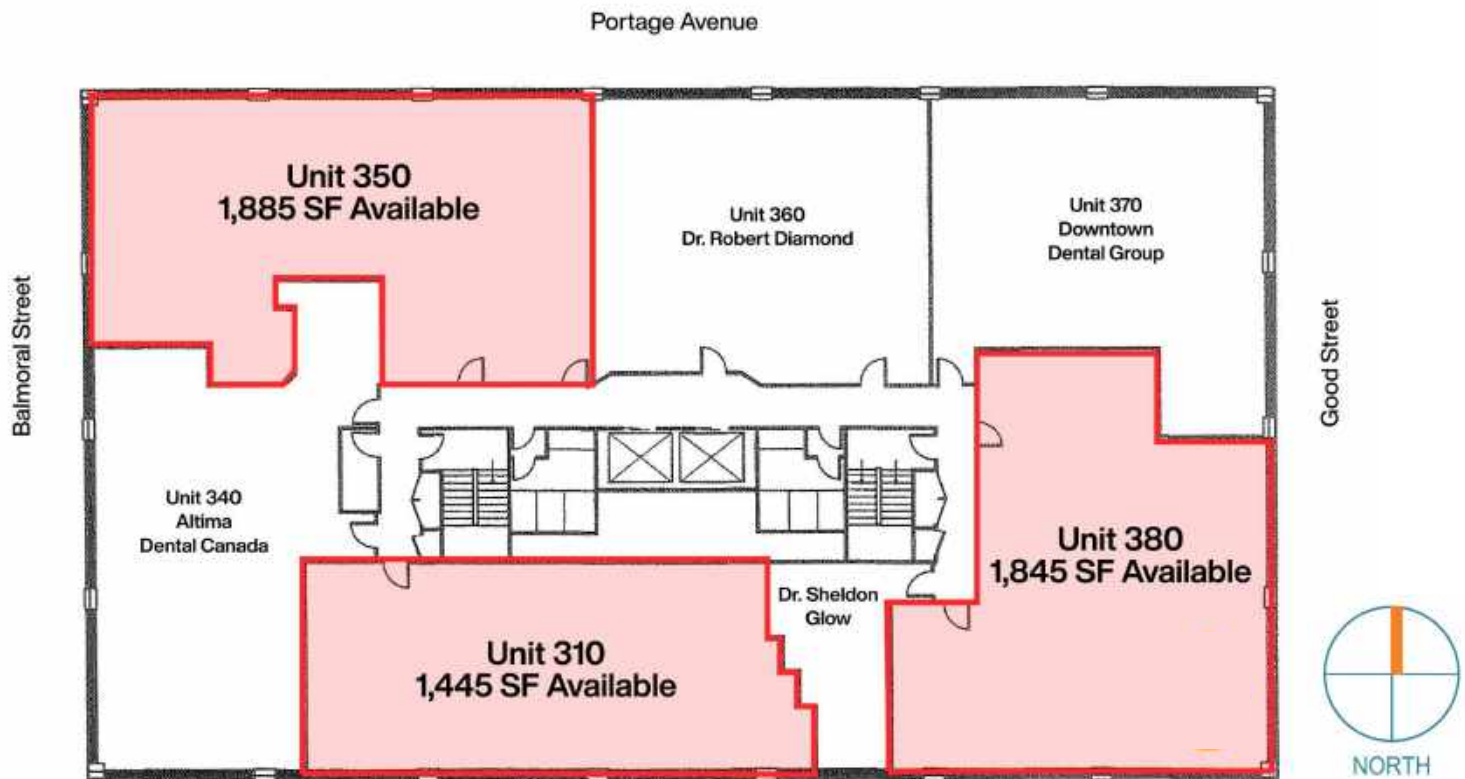
### Khush Grewal

Partner  
204.891.1999 Mobile  
204.942.2400 Office  
[Khush@NorthAtlas.ca](mailto:Khush@NorthAtlas.ca)

OFFICE FOR LEASE | 500 Portage Avenue | Winnipeg, MB

## THIRD FLOOR OPPORTUNITY

**NORTH  
ATLAS**  
COMMERCIAL REAL ESTATE



### North Atlas Commercial Real Estate

1201 - 191 Lombard Avenue  
Winnipeg, MB, R3B 0X1  
[www.NorthAtlas.ca](http://www.NorthAtlas.ca)

### Jonah Levine

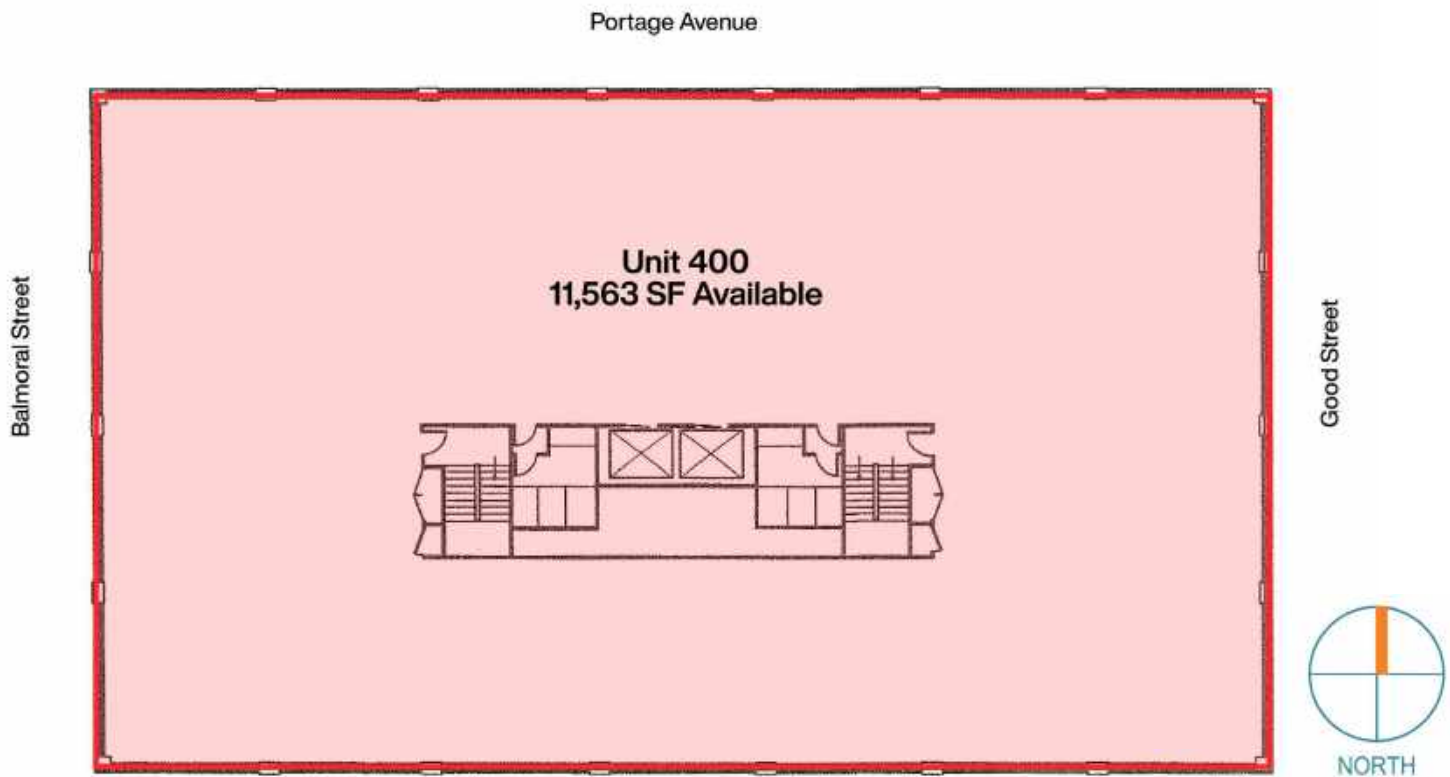
Partner & Managing Broker  
204.918.1438 Mobile  
204.942.2400 Office  
[Jonah@NorthAtlas.ca](mailto:Jonah@NorthAtlas.ca)

### Khush Grewal

Partner  
204.891.1999 Mobile  
204.942.2400 Office  
[Khush@NorthAtlas.ca](mailto:Khush@NorthAtlas.ca)

OFFICE FOR LEASE | 500 Portage Avenue | Winnipeg, MB

## FOURTH FLOOR OPPORTUNITY



### North Atlas Commercial Real Estate

1201 - 191 Lombard Avenue  
Winnipeg, MB, R3B 0X1  
[www.NorthAtlas.ca](http://www.NorthAtlas.ca)

### Jonah Levine

Partner & Managing Broker  
204.918.1438 Mobile  
204.942.2400 Office  
[Jonah@NorthAtlas.ca](mailto:Jonah@NorthAtlas.ca)

### Khush Grewal

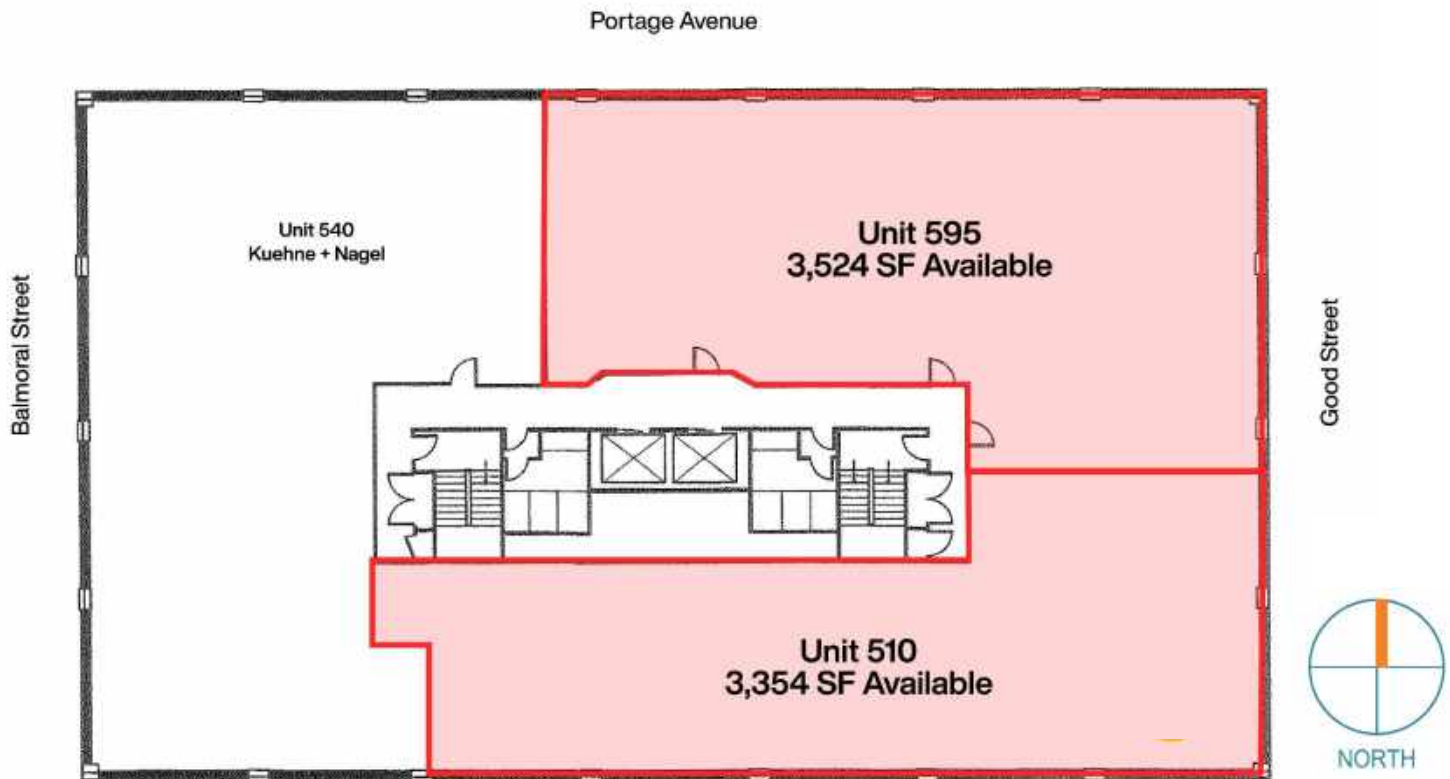
Partner  
204.891.1999 Mobile  
204.942.2400 Office  
[Khush@NorthAtlas.ca](mailto:Khush@NorthAtlas.ca)



OFFICE FOR LEASE | 500 Portage Avenue | Winnipeg, MB

## FIFTH FLOOR OPPORTUNITY

**NORTH  
ATLAS**  
COMMERCIAL REAL ESTATE



### North Atlas Commercial Real Estate

1201 - 191 Lombard Avenue  
Winnipeg, MB, R3B 0X1  
[www.NorthAtlas.ca](http://www.NorthAtlas.ca)

### Jonah Levine

Partner & Managing Broker  
204.918.1438 Mobile  
204.942.2400 Office  
[Jonah@NorthAtlas.ca](mailto:Jonah@NorthAtlas.ca)

### Khush Grewal

Partner  
204.891.1999 Mobile  
204.942.2400 Office  
[Khush@NorthAtlas.ca](mailto:Khush@NorthAtlas.ca)



OFFICE FOR LEASE | 500 Portage Avenue | Winnipeg, MB

## SIXTH FLOOR OPPORTUNITY

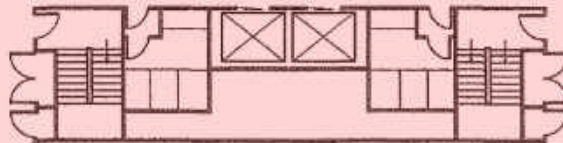
**NORTH  
ATLAS**  
COMMERCIAL REAL ESTATE

Portage Avenue

Balmoral Street

Good Street

Unit 600  
11,563 SF Available



### North Atlas Commercial Real Estate

1201 - 191 Lombard Avenue  
Winnipeg, MB, R3B 0X1  
[www.NorthAtlas.ca](http://www.NorthAtlas.ca)

### Jonah Levine

Partner & Managing Broker  
204.918.1438 Mobile  
204.942.2400 Office  
[Jonah@NorthAtlas.ca](mailto:Jonah@NorthAtlas.ca)

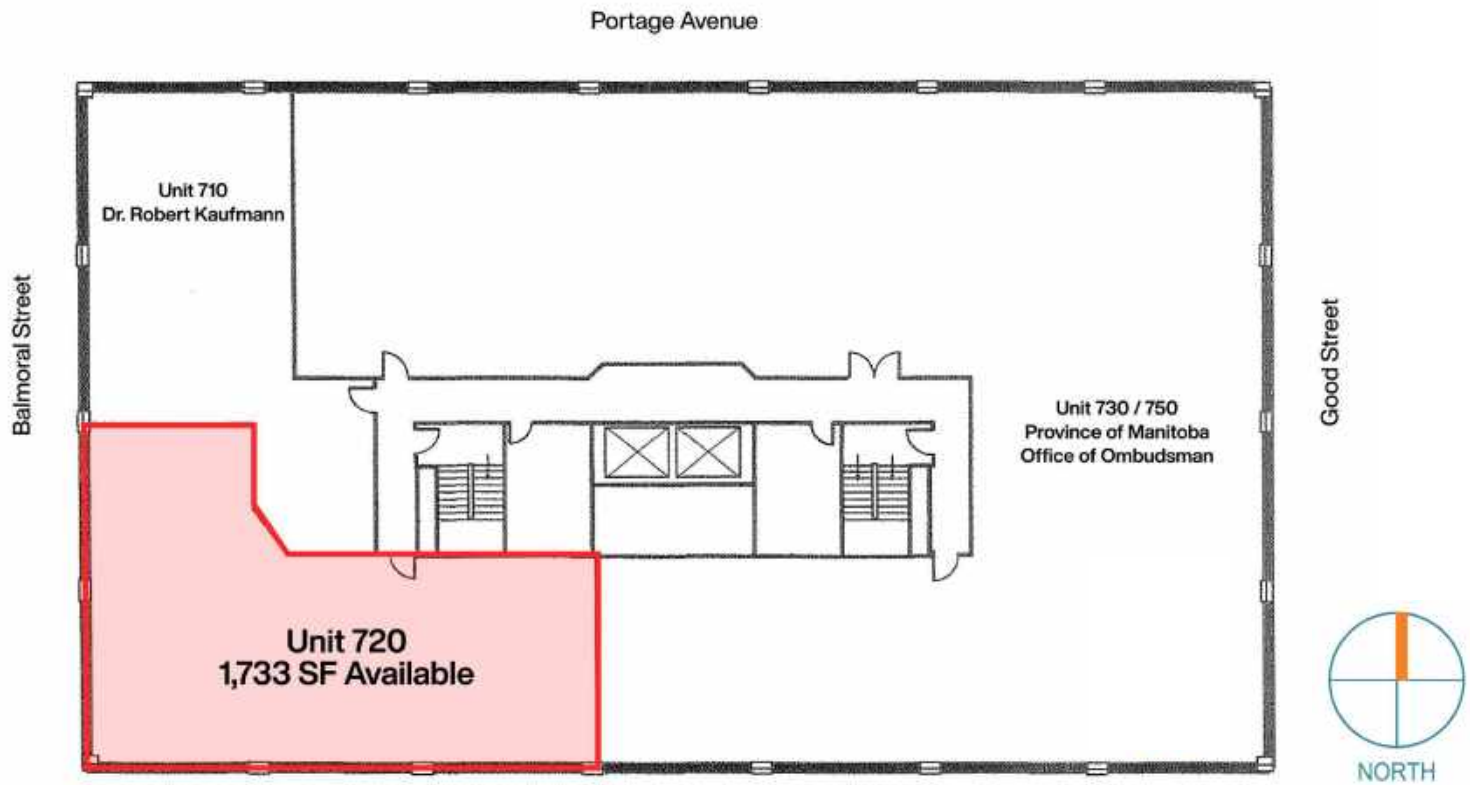
### Khush Grewal

Partner  
204.891.1999 Mobile  
204.942.2400 Office  
[Khush@NorthAtlas.ca](mailto:Khush@NorthAtlas.ca)

OFFICE FOR LEASE | 500 Portage Avenue | Winnipeg, MB

## SEVENTH FLOOR OPPORTUNITY

**NORTH  
ATLAS**  
COMMERCIAL REAL ESTATE



### North Atlas Commercial Real Estate

1201 - 191 Lombard Avenue  
Winnipeg, MB, R3B 0X1  
[www.NorthAtlas.ca](http://www.NorthAtlas.ca)

### Jonah Levine

Partner & Managing Broker  
204.918.1438 Mobile  
204.942.2400 Office  
[Jonah@NorthAtlas.ca](mailto:Jonah@NorthAtlas.ca)

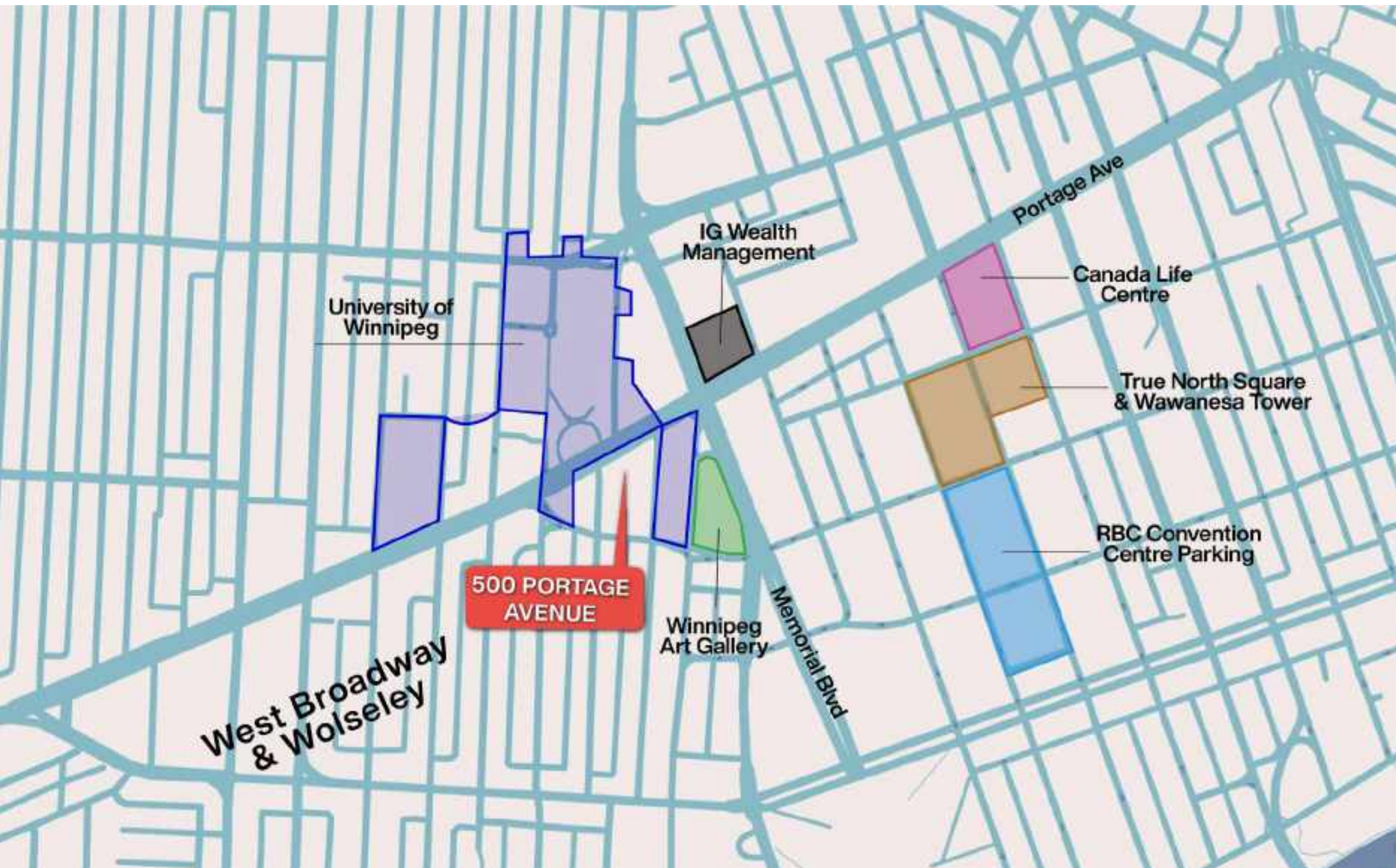
### Khush Grewal

Partner  
204.891.1999 Mobile  
204.942.2400 Office  
[Khush@NorthAtlas.ca](mailto:Khush@NorthAtlas.ca)



# NORTH ATLAS

COMMERCIAL REAL ESTATE



## OFFICE FOR LEASE

500 Portage Avenue  
Winnipeg, MB

**North Atlas Commercial Real Estate**  
1201 - 191 Lombard Avenue  
Winnipeg, MB, R3B 0X1  
[www.NorthAtlas.ca](http://www.NorthAtlas.ca)

**Jonah Levine**  
Partner & Managing Broker  
204.918.1438 Mobile  
204.942.2400 Office  
[Jonah@NorthAtlas.ca](mailto:Jonah@NorthAtlas.ca)

**Khush Grewal**  
Partner  
204.891.1999 Mobile  
204.942.2400 Office  
[Khush@NorthAtlas.ca](mailto:Khush@NorthAtlas.ca)